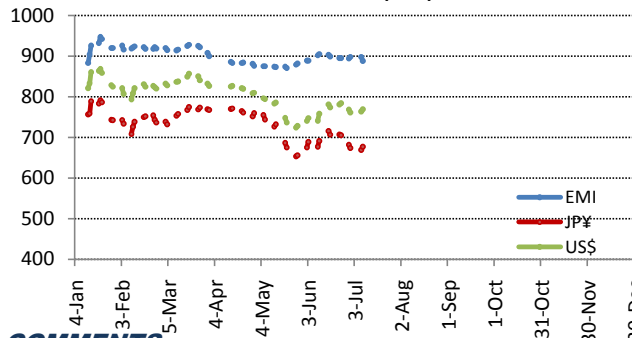


# Motohiro Weekly Market Report

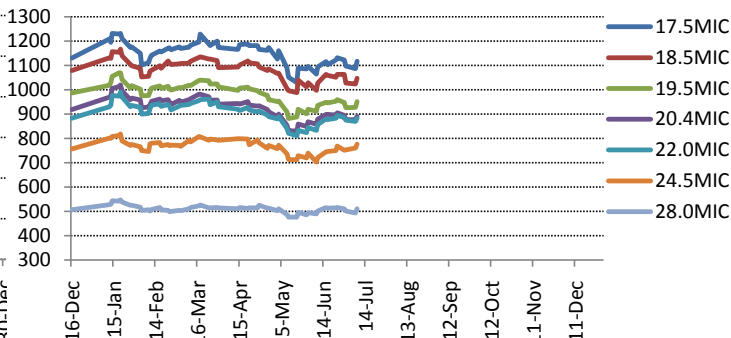
8-Jul-10

SALE WEEK 01 (2010/2011 Season Start)

AWEX EASTERN MARKET INDICATER (EMI) 2010



MICRON INDEX 2010 (USC basis)



## COMMENTS

The first sale of the new selling season provided a much larger selection. Some growers have chosen to hold wool until the new season for financial reasons. The larger offering was expected to put some pressure on the market but as is always the case, and often noted by us, the better selection actually creates more competition as it gives the buyers something to work with. The small sales with small offerings often work against the industry. While the offering was larger in volume, the quality was not noticeably any better. The small offering of better style and strength lots are still getting good competition, particular around 18.5 / 19.0 micron. Eventually the larger selection of average types forced overall prices lower. The fleece competition is focused very noticeably on middle break. All wool regardless of length or strength with a low mid break is attracting keen competition and buyers are more cautiously picking up the high mid break lines, even those with good strength.

羊毛セールは今週から新シーズンのスタート。年度替り直後の大量出市と、折からの世情不安で、セール始まる前は軟調相場を予想する見方もあったが、休会直前という原料手当ての段取り上の問題と、週後半から金融市場に突如先行き楽観論が広まり豪ドルが急上昇したお陰で、結果的にUSDベースの羊毛相場は1~2%上昇した。

来週はシーズン休会前の最終セール。その後ほぼ1カ月の間羊毛市場は休場となるので、ある程度の駆け込みオーダーも見込まれる事から、まずまず堅調納会となりそうな雰囲気。ただし為替の動向如何ではまだまだ波乱含みなので要警戒。

## MICRON INDEX

~18.5mic	反発。USDベース：+1~2%
19.5mic	反発。USDベース：+2~3%
20.5mic	反発。USDベース：+1~2%
22.0-23mic	反発。USDベース：+1~2%
24.5mic	反発。USDベース：+2~3%
XBD's	反発。USDベース：+1~2%
CARDINGS	横ばい。USDベース：+0~1%

## MAIN BUYERS/BALES

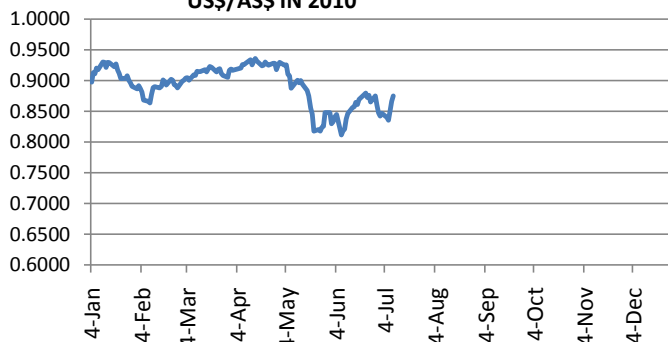
VTR-	4,462	LEMP-	3,687	WILL-	3,628
TECH-	3,488	FOX-	3,485	KTEX-	3,122
PJM-	2,686	EWI-	2,287	MOD-	2,085
QLC-	1,911	ASG-	1,479	GSA-	1,000

## NEXT SALES

Week 02 (13-14/Jul)	
SYDNEY	18,970 BALES
MELBOURNE	17,346 BALES
FREMANTLE	4,284 BALES
<b>TOTAL</b>	<b>40,600 BALES TO BE OFFERED</b>

<Motohiro Sydney Office>

US\$/AS\$ IN 2010



CRB INDEX in 2010

